



Spring Planning & Preparing for Planting in School Gardens Webinar

Monday, April 13, 2020 3:15-4:15 PM

But first,
a bit of
housekeeping:



Webinar is being recorded – will be available on the Mass. Farm to School website



We will be sharing resources through the chat feature and again via email after the webinar concludes.



Q&A will be available through the chat & hand raise functions. You can submit questions via chat at any time throughout the webinar.



Please do not turn on your microphone or video until the Q&A

Mass. Farm to School

Helping you make farm to school a reality for every student in Massachusetts

- Tools for Schools & Advocates
- Individualized Tech Assistance
- Professional Learning Opportunities

Visit us online at

www.massfarmtoschool.org



Massachusetts Farm to School Network

The Massachusetts Farm to School Network provides statewide leadership to align, strengthen, and grow the farm to school movement across classrooms, cafeterias, and communities.

Education | Supply Chain | Policy | Comm. & Engagement





Meet the Edu
Working Group Co-
Chairs (and today's
co-presenters)!

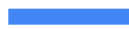
- Hope Gardener, *Executive Director for School Sprouts*
- Calin Duke, *Farm to School Manager for Sustainable Nantucket*

Education Working Group

The purpose of the Education Working Group is to integrate garden, farm, and food-based education statewide through promotion of best practices and support throughout whole school communities.



Spring Planning and Planting



For the usual spring season as well as uncertain times



Goals for Harvest Time

What can you grow for the cafeteria?

Learning about healing properties of plants

Eating a meal from the garden

Learning about plant structure

Exploring senses in the garden

Selling at the farmers market



Harvest a Pizza

Tomatoes

Wheat

Herbs

Garlic and Onions



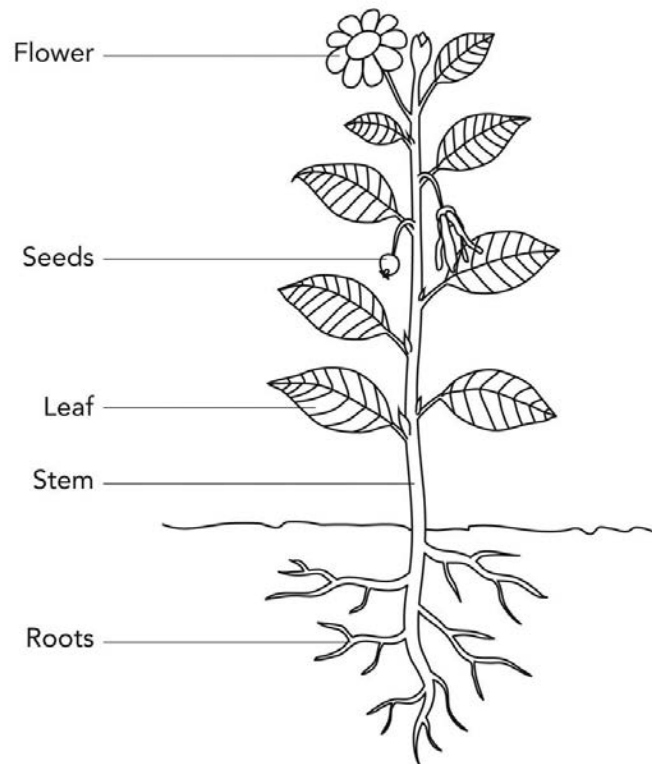
Healing Wheel



Pasta and Pesto



Plant Parts



Planting for Community

- Summer Garden Families
- Donating food to pantries
- Selling at community farm stands



Spring Planting for or Fall Harvest

Radishes/Turnips → Carrots/Beets of many colors

Spinach/Lettuce → Popcorn/Flour corn

Peas → Dry Beans

Garlic → Onions

Perennials - Rhubarb, sorrel,
chives, mint, comfrey

Winter Squash

Potatoes

Perennials - Oregano, thyme,
rosemary, horseradish

Make sure to have... "SNACKABLES"



.....and crops with a “WOW!” factor.



Tools for planting with students

Planting Grids - Dibblers - Hand measuring



Tools for planting with students (cont.)

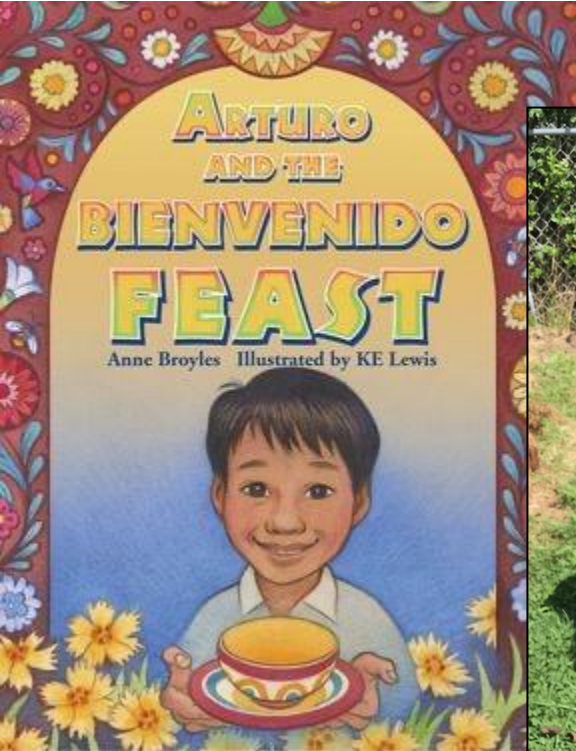
trowels - popsicle sticks - etc...



Think About Student Access to Beds



Use What You Have In The Garden



Plan but be Flexible



Use Teachable Moments





Involve Community

Remote activities for garden planning

Dibbler video

<https://youtu.be/INTHgM-D-Us>

Seed Tape

<https://youtu.be/DD4rs8vfI3c>

Seed balls

https://docs.google.com/document/d/1Z8Ki3dqTW1KTg2dI92AZ8FRgrnQV8u0CzrE3wJ3IT_s/edit



Thanks for being here!

QUESTIONS? THOUGHTS? IDEAS?