

# HARVEST of the MONTH in the CLASSROOM



## DAIRY

### HISTORY

People have been drinking animal milk for as long as we have had domesticated animals. The ancient Egyptians produced dairy products, but reserved it for royalty! In European nations, it wasn't until the 14th century that cow's milk became more popular than sheep's milk. Dairy cows were brought to North America by Europeans in the early 1600s, but it took hundreds of years, until 1884, for the glass milk bottle to be developed, and it wasn't until the 1930s that the milk carton was used!

### FUN FACTS

Neolithic herdsmen from Central Asia may have discovered yogurt by accident, when milk curdled and thickened!

There are over 800 different breeds of cow and six different breeds of dairy goat. Goat milk is popular outside of the U.S.

The average cow produces six gallons of milk per day, or about 55 pounds. This adds up to about 350,000 glasses of milk in a lifetime.

There are about 1,200 dairy farms in New England, but all 50 states have dairy farms.

### FARMER BIO



High Lawn Farm (Lee, MA) owns 1,600 acres of land, and actively farms 460 of those acres and the rest is protected woodland for wildlife. They grow hay and corn to feed their herd of Jersey cows, which they milk. They produce a wide range of dairy products, and cheese (Italian Cheddar, Blue, and Vache are just some of the cheeses they make!) is their favorite. Their products are available at their farmstead creamery, and they ship to grocery stores, restaurants, and schools throughout New England.

# DAIRY COW BREEDS

Grades K-3 • 30 minutes



## OBJECTIVES

Students will learn that different breeds of cows produce milk and will learn about specific traits linked to specific breeds

## ESSENTIAL QUESTIONS

- What is a dairy cow?
- Are all dairy cows the same?

## MA STATE FRAMEWORK(S)

K-3 Life Sciences  
1-LS3-1

## MATERIALS NEEDED

- Handouts:
- "Who Am I"
  - Cow Outline

## PROCEDURE

### Introduction

Ask students if they know what a dairy product is and have them name as many dairy foods as they can. Ask students if they know what type of animal dairy products come from (cows, goat, sheep etc.). Encourage students to picture what a dairy cow looks like.

### Activity: "Who Am I?" Game

Give each student a set of Dairy Cow Breeds cards. Tell students that each card contains a picture of a different breed of dairy cow. Each breed has distinctive features and traits that help them adapt to their environment. Let students know you will be reading a clue about a breed and ask them to hold up the cow card they think matches the clue. Once you've talked about each breed, pass out the cow outline handout and have students design their own cow. Encourage them to cross two breeds and be creative.

### Wrap Up

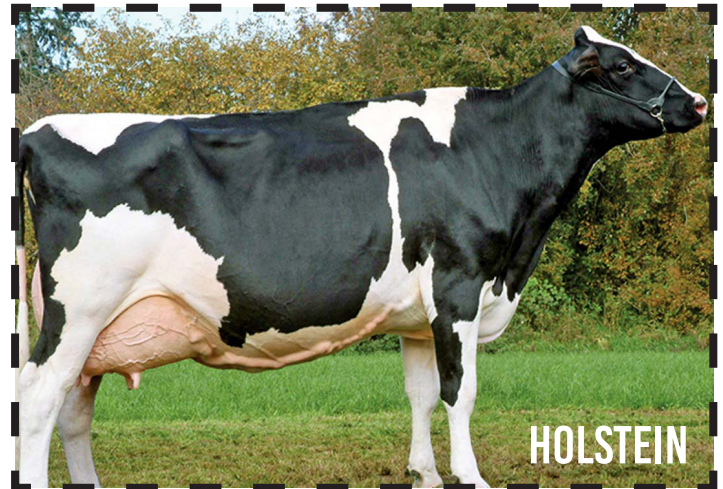
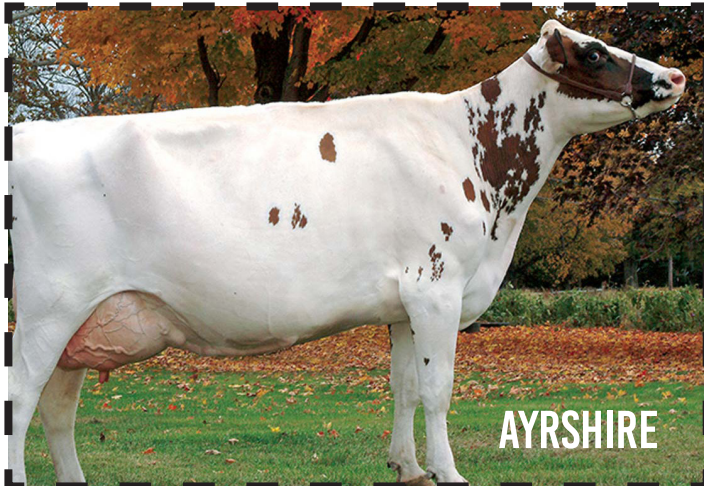
Have each student share the cow that they designed and why they chose that breed.

# DAIRY COW BREEDS

## Cow Cards



**DAIRY**



Images from Dairy Discovery Zone & Small Farmers Journal

# DAIRY COW BREEDS

## Cow Riddles



### DAIRY

I am the oldest of all the dairy breeds. My name comes from the country where my breed originated. I am light brown in color with a cream colored muzzle. I am also known to be quiet and calm. Who am I?

(Answer: Brown Swiss)

I have cream colored milk and my name might remind you of a shirt, but its actually name of the the island that I come from. I am usually a light brown color, but can sometimes be light gray. My milk contains 18% more protein than the average cow's. Who am I?

(Answer: Jersey)

I am easily recognizable and produce the most milk of any cow breed. I am not picky about what I eat, but I do not like hot weather. I can produce up to 67,914 pounds of milk each year. My black spots might give me away. Who am I?

(Answer: Holstein)

I am normally red in color and sometimes have a white tail. I like to forage for my diet and I love a warm climate. Who am I?

(Answer: Milking Devon)

I am usually red and white. I am a strong cow and I have horns that are sometimes removed when I am a calf. My name comes from the island of Ayr in Scotland. Who am I?

(Answer: Ayrshire)

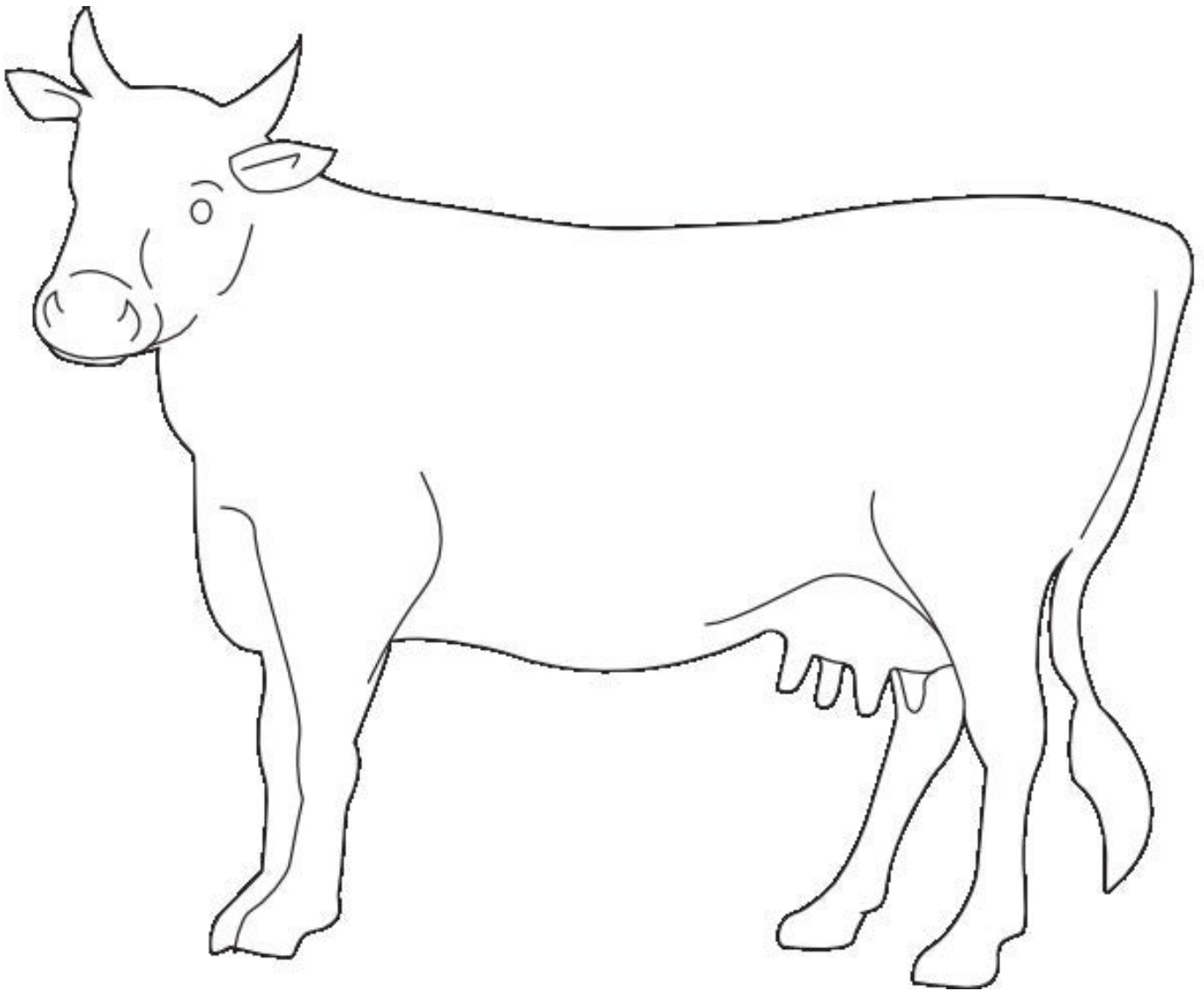
My color varies from tan to reddish brown. I don't mind hot or cold temperatures and I am a calm breed. I make golden colored milk. Who am I?

(Answer: Guernsey)

# DAIRY COW BREEDS



**DAIRY**



My Cow is a: \_\_\_\_\_