



**MASSACHUSETTS
FARM TO SCHOOL**

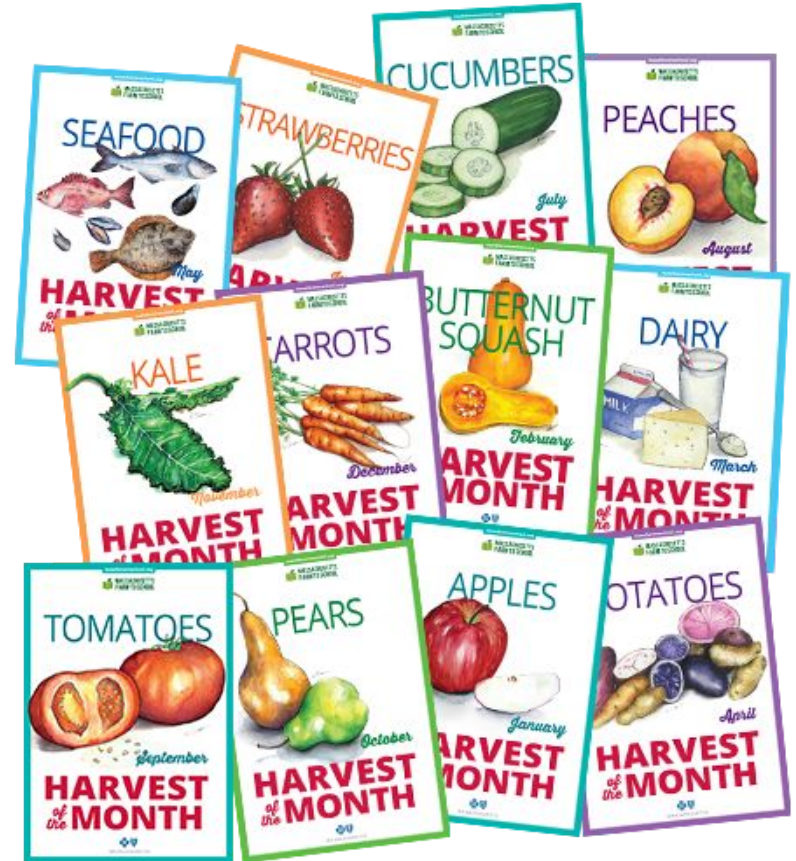
Local Food For Schools

An opportunity for your farm?

MASS. FARM TO SCHOOL OVERVIEW

Mass. Farm to School strengthens local farms and fisheries and promotes healthy communities by increasing local food purchasing and education at schools.

- Professional learning opportunities
- Networking
- Policy/Advocacy
- Communications



Local Food for Schools Overview

Funding Amount: \$3.5 million in new, one-time USDA funding for MA public schools

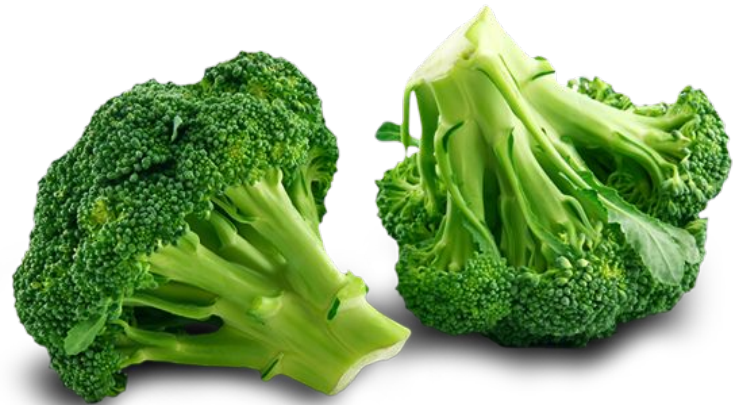
Eligible School Districts: All MA districts can opt-in to participate

Eligible Products: Unprocessed and lightly processed foods grown/raised within 400 miles

Award Size: Up to \$100,000 per school district depending on district size, interest, and available funds

Program Timeline:

Funds distributed to schools early this spring, available through (at least) June 2024



School Customers: Considerations for Farmers

- Set up a good customer communication system at the beginning
- Figure out your minimum sales requirements and preferred customer profile in advance
- Delivery Schedules & Logistics
- Schools may menu-plan months in advance
- Schools can be reliable, wholesale accounts
- School year and summer sales opportunities
- Farm field trips and other school relationships are possible



Technical Support Available to Farms

- Direct connections to participating schools
- Individual guidance on working with schools
- Support responding to 3-quote or RFP solicitations if needed**
- Other help as requested!



**Total sales under \$10,000 do not require 3-quote process

Next Steps

- MDAR directory of farms interested in school sales
- Reach out to existing school customers to ask them to opt-in
- Reach out to MFTS for support



MA FRESH Grant (Farming Reinforces Education & Student Health)

- Grants of \$5,000-\$50,000 for **schools** and early education centers that participate in federal lunch program
- Approximately \$500,000 available this school year
- Can fund a wide variety of activities including farm field trips, kitchen equipment to process local food.



<https://www.doe.mass.edu/grants/2023/715/>

Encourage schools you work with to apply!

Q&A

Visit us online:

www.massfarmtoschool.org

Lisa Damon, Co-Director

lisa@massfarmtoschool.org

Simca Horwitz, Co-Director

simca@massfarmtoschool.org

